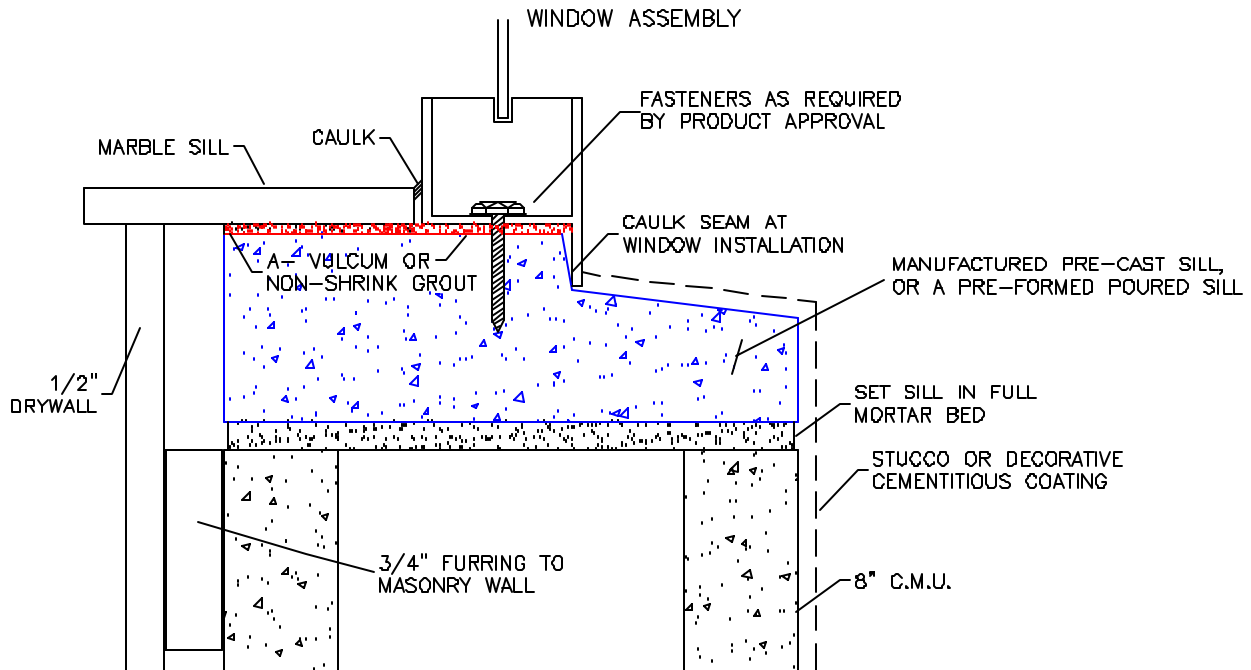


# TYPICAL SILL INSTALLATION



A – Any space existing between window's sill and precast sill will be filled with vulcum, or a non-shrink grout (not by window installer).

B – Under no circumstances should a buck be placed on the precast sill under the window's sill.

SHOULD THE WINDOW BE BUCKED AT THE SILL, OR YOU ELECT TO POUR A SILL UNDER AN INSTALLED WINDOW, LAWSON REQUIRES A SIGNED WAIVER DISCLAIMING POSSIBLE INTERIOR DAMAGE FROM WATER PENETRATION.

## Revision Notes:

**LAWSON**  
**INDUSTRIES, INC.**  
[www.lawson-industries.com](http://www.lawson-industries.com)

8501 NW 90th St.  
 MEDLEY, FLORIDA 33166  
 (305) 696-8660

MANUFACTURER OF QUALITY ALUMINUM WINDOWS AND GLASS DOORS

Draw Class:	Part Class:	Prod Category:	Series/Model:	Item:	Sheet:
LAYOUT					

Checked By: **XXX**

Date Checked:

Drawn By: **Tom Sotos**

Date Drawn:  
 April 24, 2007

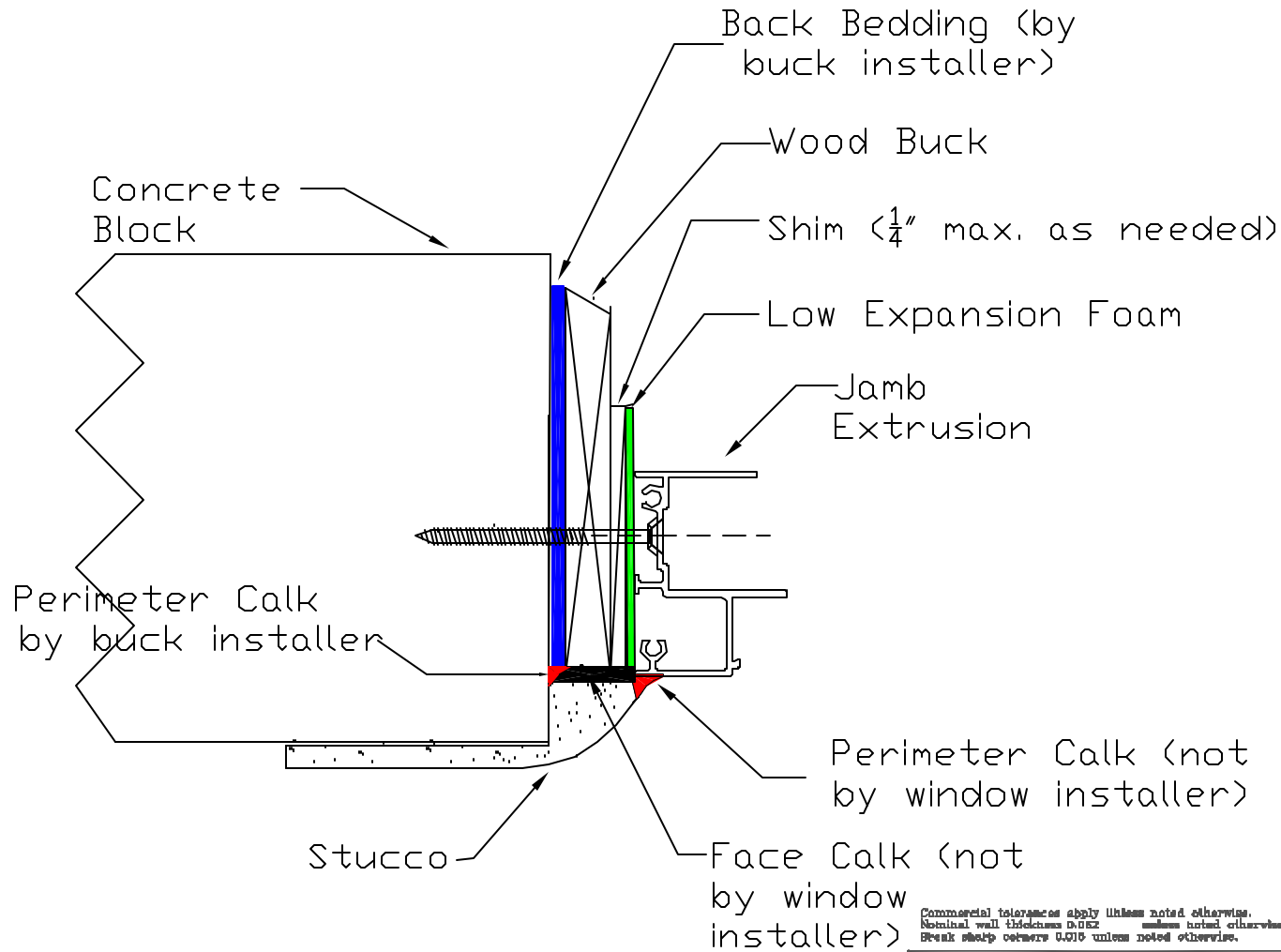
TYPICAL SILL INSTALLATION

Scale:  
 NTS

Part Number:

Drawing Number:

Revision Level:



Commercial tolerances apply unless noted otherwise.  
 Notched wall thickness 0.0125 unless noted otherwise.  
 Break sharp corners 0.015 unless noted otherwise.

<b>Structure Notes</b>				<b>LAWSON</b> INDUSTRIES, INC. <small>MANUFACTURER OF QUALITY ALUMINUM WINDOWS AND GLASS DOORS</small>		8501 N.W. 90 ST.		MEDLEY, FLORIDA 33108		PH No. (305) 898-8880	
Partitions	0.000	0.000	0.000			0.000	0.000	0.000	0.000	0.000	0.000
Materials	0.000	0.000	0.000	0.000	0.000	0.000	0.000	0.000	0.000	0.000	
Co-ord	0.000	0.000	0.000	0.000	0.000	0.000	0.000	0.000	0.000	0.000	
Drawn By	Tom Sokos			Scale	1/16" = 1'-0"		Sheet	---		Revision	---
Checked By	---			Scale	---		Sheet	---		Revision	---
Part	---	---	---	Part Number	XXXXXX		Drawing Number	XX-XX-XX		Revision	---

**GENERIC WINDOW WATERPROOFING PRACTICE**